



# GMT MONTHLY MEMBERSHIP PROGRESS REPORT

Results as of: 8/31/2019

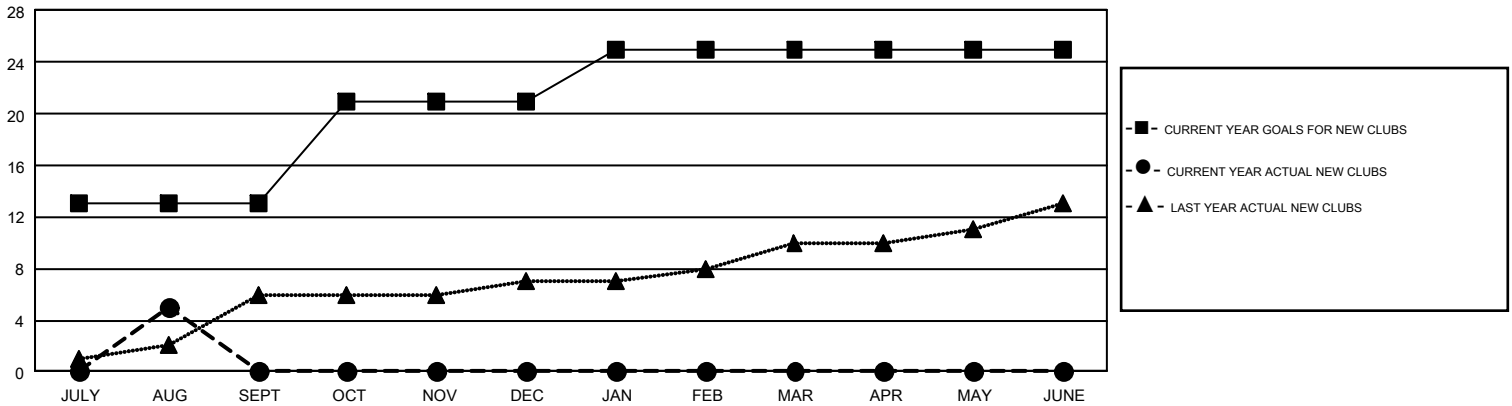
## GMT Constitutional Area 5 - K, Group L

GMT: OPEN

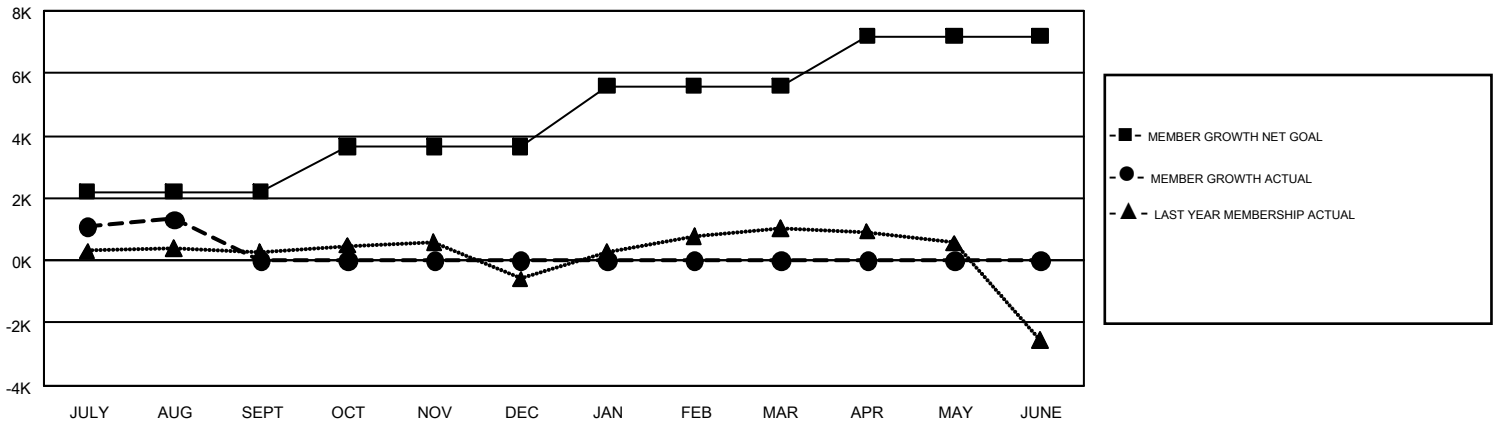
REPORT DOES NOT INCLUDE CLUBS IN UNDISTRICTED AREAS.

Clubs				Members			
RESULTS FOR 2019-2020				RESULTS FOR 2019-2020			
QUARTER	NEW CLUB GOAL	NEW CLUBS	DROPPED CLUBS	QUARTER	MEMBER GROWTH NET GOAL	MEMBER GROWTH ACTUAL	DROPPED MEMBERS ACTUAL (including transfers)
JULY/AUG/SEPT	13	5	3	JULY/AUG/SEPT	2210	2,353	956
OCT/NOV/DEC	8	0	0	OCT/NOV/DEC	1450	0	0
JAN/FEB/MAR	4	0	0	JAN/FEB/MAR	1940	0	0
APR/MAY/JUNE	0	0	0	APR/MAY/JUNE	1590	0	0

GOALS AND ACTUAL NEW CLUBS CUMULATIVE



GOALS AND ACTUAL MEMBERS CUMULATIVE



DROPPED CLUBS: 3	525 CLUBS OF 1,057 ADDED 1 OR MORE NEW MEMBERS	<u>GENDER DISTRIBUTION</u>	
<u>DROPPED MEMBERS</u>		MALE	35,973 (71.79%)
DECEASED	10	FEMALE	14,136 (28.21%)
CLUB CANCELLED	0	TOTAL FAMILY UNIT MEMBERS	6,111
OTHER	946	FAMILY MEMBERS PAYING HALF DUES	3,703
TOTAL	956		

[CLICK HERE FOR CUMULATIVE MEMBERSHIP DATA](#)